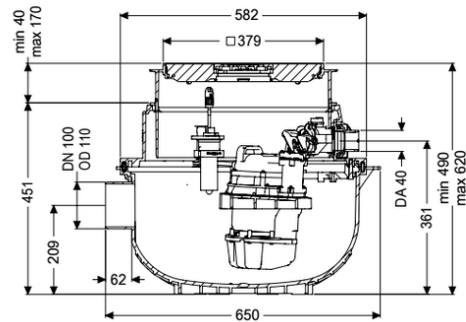


## Aqualift S Compact lift stat. Duo, GTF 1200, Floor slab



### Article information

Item no.: 281230S  
GTIN: 4026092082744  
Price group: 20

### Advantages

- Space-saving due to installation in floor slab with integrated drainage function
- Easy retrofitting from Mono to Duo possible
- Quiet operation, as the pump installation does not cause any structure-borne sound emissions.

### Description

The ready to plug in lifting station for faecal-free wastewater is equipped with one or two submersible pumps and a backflow preventer. The collection tank made of permanently resistant polymer (PE) has an open pump tank. One-handed closures enable easy removal of the integrated components. The system for installation in the floor slab is preassembled for final installation on site.

#### Variant

|                       |              |
|-----------------------|--------------|
| Type of system:       | duo pump     |
| Rim width:            | Control unit |
| Backwater protection: | integrated   |

#### General characteristics

|                         |   |
|-------------------------|---|
| Colour:                 | black   |
| Standard:               | EN 12050-2  |
| Type of wastewater:     | without sewage  |
| Installation situation: | floor slab installation   |
| Delivery state:         | Installation-ready (connection parts must be connected on site) |
| System type:            | Duo   |

#### Dimensions

|             |         |
|-------------|---------|
| Net weight: | 40,2 kg |
|-------------|---------|

|  |                                     |
|--|-------------------------------------|
| Gross weight:  | 43 kg                               |
| Groundwater resistant from lower edge of base section: | 3000 mm                             |
| Installation depth:                                    | 490 - 620 mm                        |
| Vertical adjustment:                                   | vertically adjustable upper section |
| Length:  | 617 mm                              |
| Width:   | 585 mm                              |
| Packaging dimension:                                   | length                              |
| Packaging dimension:                                   | width                               |
| Packaging dimension:                                   | height                              |

|                                |        |
|--------------------------------|--------|
| Tank/drain body                |        |
| Pressure pipe connection (DN): | 32     |
| Pressure pipe connection (OD): | 40 mm  |
| Inlet nominal size (DN):       | 100 mm |
| Pumping volume:                | 20 l   |

|                   |                                |
|-------------------|--------------------------------|
| Coverage features |                                |
| Type of cover:    | Cover plate with slotted cover |
| Cover material:   | Polymer                        |
| Colour of cover:  | black                          |
| Width of cover:   | 366 mm                         |
| Length of cover:  | 366 mm                         |
| Cover locking:    | Lock & Lift                    |
| Load class:       | K 3 (EN 1253-1)                |

|  |                     |
|--|---------------------|
| Pumping device                                     |                     |
| Pump control:                                      | GTF 1200            |
| Number of pumps:                                   | 2                   |
| Connection type:                                   | coded plug          |
| Rated current:                                     | 6,2 A               |
| Length of mains cable for pump:                    | 5 m                 |
| Protection class control unit:                     | IP 68 (3m)          |
| DSC:   | integrated          |
| Max. temperature (permanent) of conveyed material: | 40 °C               |
| Hot water resistance for a short time (2 min):     | 80 °C               |
| Max. pumping capacity:                             | 15,5 m³/h           |
| Max. pumping height:                               | 9 m                 |
| Speed:   | 2650 U/min          |
| Power P1:  | 1,4 kW              |
| Power P2:  | 0,84 kW             |
| Operating mode:                                    | S1                  |
| Type of fuse required (electrical protection):     | C 16 A              |
| Type of pump connection cable:                     | H07RN-F 3G 1.5 mm²  |
| Impeller type:                                     | Multi-vane impeller |
| Free passage:                                      | 30 mm               |

|               |         |
|---------------|---------|
| Control       |         |
| Control unit: | Comfort |

|   |                |
|---|----------------|
| Alarm sensor:                           | optical probe  |
| Level measurement instrument:           | Immersion pipe |
| Type of level measurement:              | pneumatic      |
| Protection class probe:                 | IP 54          |
| Mains frequency:                        | 50 Hz          |
| Operating voltage:                      | 230 V          |
| Connection type:                        | coded plug     |
| Length of mains cable for control unit: | 1,4 m          |
| Potential-free contact:                 | optional       |
| GSM interface:                          | yes            |
| USB interface:                          | yes            |
| Log book function:                      | yes            |
| Multi-line display:                     | yes            |
| Battery buffering:                      | yes            |
| Self-diagnosis system (SDS):            | yes            |
| Rated current:                          | 6,2 A          |